

SPILL AT BLDG 1950 AND 1951 (ENGINE TEST CELL) SS-21

Joint Base Andrews

April 2022

BACKGROUND

Former Buildings 1950 and 1951 on Joint Base Andrews (JBA) are the location of the Engine Test Cell Site (SS-21). A plume of petroleum-contaminated groundwater formed as a result of faulty piping from an underground storage tank (UST) and an oil water separator. Free-phase petroleum was not encountered in the on-site monitoring wells during the investigation. Buildings 1950 and 1951 were demolished in December 2000. During demolition activities, the UST, fuel lines, oil-water separator, and 250 cubic yards of petroleum-impacted soils were removed from the site. Clean backfill was placed in the excavation and planted with grass seed.

The past schedule for this site was:

Remedial Investigation (RI)	5/2003 (Complete)
Feasibility Study (FS)	5/2003 (Complete)
Proposed Plan (PP)	7/2006 (Complete)
Record of Decision (ROD)	7/2006 (Complete)
Remedial Design (RD)	N/A
Remedial Action-Construction (RA-C)	N/A
Remedy in Place (RIP)	4/2004 (Complete)
Remedial Action-Operation (RA-O)	N/A
Response Complete (RC)	7/2006 (Complete)
Site Closure (SC)	7/2006 (Complete)

CHALLENGES

The investigation and cleanup have been completed and the site is closed.

PERFORMANCE BASED APPROACH

Groundwater monitoring confirmed a declining trend of dissolved-phase petroleum concentrations.

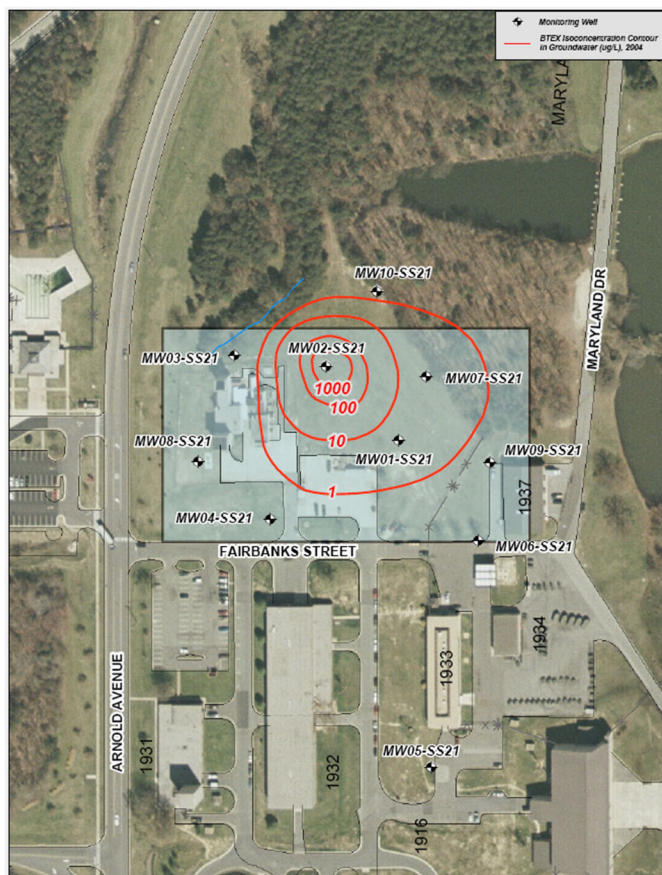


Figure 1: SS-21 Site Map with BTEX Plume

The Maryland Department of the Environment (MDE) Oil Control Program (OCP) closed the case and directed JBA to abandon the wells. The site has been cleared for commercial/industrial land use.

RISK DRIVERS

Contaminants: Petroleum hydrocarbons
Media: Surface and subsurface soil
Exposure Pathways Completed: Construction worker exposure during excavation activities
Drainage: Henson Creek West
Current Land Use/Surface Cover: Industrial
Reasonably Anticipated Land Use: Industrial
Relative Risk: NR