

SLUDGE DISPOSAL AREA (RUNWAY)

SD-23

Joint Base Andrews

April 2022

BACKGROUND

Waste Water Treatment Sludge from the White Plains Treatment Plant was disposed of on the airfield at Joint Base Andrews (JBA) in the 1960s. The sludge was placed in six inch lifts for grading purposes and to promote vegetative growth. The exact extent and thickness of the sludge is unknown, but the material represents the waste water stream from Washington, DC in the 1960s. EPA Region 3 agreed to use a streamlined approach to addressing contamination at this site due to the unique controlled location in the center of the airfield as well as the limited presence of receptors.

The past schedule for this site was:

Remedial Investigation (RI)	5/2007 (Complete)
Feasibility Study (FS)	5/2007 (Complete)
Proposed Plan (PP)	5/2007 (Complete)
Record of Decision (ROD)	5/2007 (Complete)
Remedial Design (RD)	N/A
Remedial Action-Construction (RA-C)	N/A
Remedy in Place (RIP)	N/A
Remedial Action-Operation (RA-O)	N/A
Response Complete (RC)	5/2007 (Complete)
Site Closure (SC)	5/2007 (Complete)

CHALLENGES

The investigation has been completed and the site has been closed.

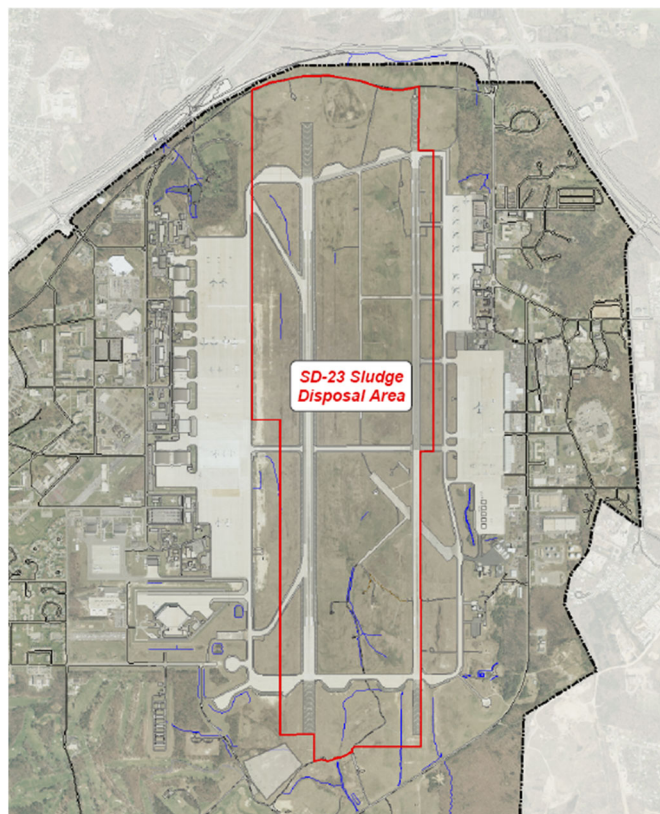


Figure: Site map SD-23

PERFORMANCE BASED APPROACH

The investigation has been completed and the site has been closed with concurrence from the Air Force, Prince George's County Health Department, Maryland Department of the Environment, and the Environmental Protection Agency.

RISK DRIVERS

Contaminants: Metals

Media: Surface soil and sediment

Exposure Pathways Completed: NA

Drainage: Piscataway Creek

Current Land Use/Surface Cover: Industrial

Reasonably Anticipated Land Use: Industrial

Relative Risk: No Unacceptable Risk