

ABANDONED UNDERGROUND TANKS

ST-09

Joint Base Andrews

April 2022

BACKGROUND

Ten underground storage tanks (USTs) were removed from various locations on Joint Base Andrews (JBA):

- Two USTs from Leroy's Lane Landfill (LF-05)
- One UST from Building 1773 (ST-10)
- One UST from Building 1775 (ST-10)
- One UST from Building 1568 (TU-24)
- One UST from Building 2185
- One UST from Building 3121 (SS-26)
- One UST from Building 3165
- One UST from Building 3354 (ST-08)
- One UST from Building 3537 (TU-25)

A Maryland Department of the Environment (MDE) representative was present at all UST removals and provided tank closure documentation for each tank.

Some USTs were co-located with other Environmental Restoration Program (ERP) sites, so residual contamination that exists for those tanks is managed through the remediation program for their respective sites.

The past schedule for this site was:

Remedial Investigation (RI)	09/1990	(Complete)
Feasibility Study (FS)	09/1990-2006	(Complete)
Proposed Plan (PP)	09/1990	(Complete)
Record of Decision (ROD)	09/1990	(Complete)
Remedial Design (RD)	N/A	
Remedial Action-Construction (RA-C)	09/1990	(Complete)
Remedy In Place (RIP)	09/1990	(Complete)
Remedial Action-Operation (RA-O)	N/A	
Response Complete (RC)	09/1990	(Complete)
Site Closure (SC)	09/1990	(Complete)

CHALLENGES

The USTs have been removed, the investigations have been completed, and the ST-09 site has been closed.

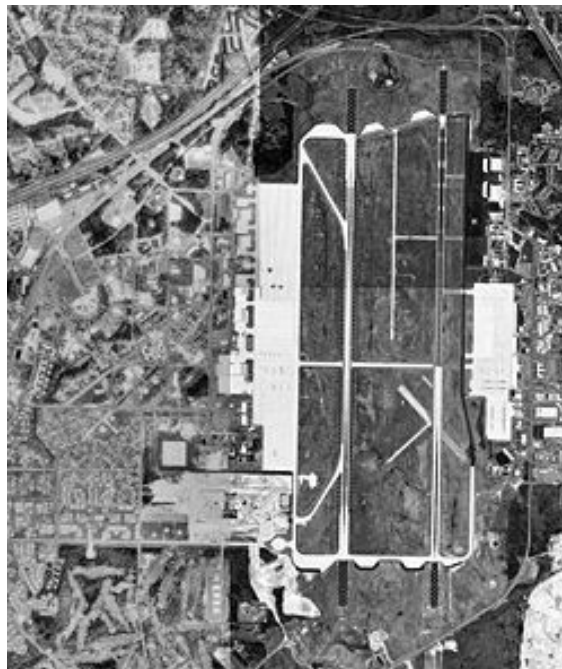


Figure: JBA Map - The ST-09 sites were scattered throughout the Base.

PERFORMANCE BASED APPROACH

The USTs have been removed, the investigations have been completed, residual contaminants are managed through the remedies at other restoration sites where they are co-located, and ST-09 has been closed.

RISK DRIVERS

Contaminants: Petroleum constituents and related waste

Impacted Media: Source removed

Exposure Pathways Completed: Source removed

Drainage: Cabin Branch North, Cabin Branch South, Charles Branch, Piscataway Creek, Payne's Branch, Meetinghouse Branch, and Henson Creek

Current Land Use/Surface Cover: Industrial

Reasonably Anticipated Land Use: Industrial

Relative Risk: NR