

LANDFILL 6

LF-06

Joint Base Andrews

April 2022

BACKGROUND

Landfill 06 (LF-06) is located on the south side of the base and is approximately 11 acres in size. The site is immediately adjacent to the south end of the west runway. LF-06 operated from the 1950s to the 1960s as a disposal site primarily for construction debris and miscellaneous commercial and household waste. LF-06 drains towards Piscataway Creek, located immediately east of the site. The former Defense Reutilization and Marketing Office (DRMO) building located within the LF-06 site boundary, but outside of the landfill waste footprint, was demolished prior to site investigation activities. A skeet range was located northwest of this site until 2000.

The Remedial Investigation (RI) was completed in May 2007. Supplemental RI groundwater characterization was completed in 2009 to fill data gaps. The results indicate that no leachate plumes are emanating from the landfill and no actionable risk is posed by the groundwater at LF-06. Subsurface soil risks to future potential residents were found within the landfill footprint at LF-06. At the former DRMO, risk drivers include surface soil containing furans, antimony, arsenic, lead and polychlorinated biphenyls (PCBs). At Piscataway Creek, ecological risk drivers include sediments containing lead and polycyclic aromatic hydrocarbons (PAHs).

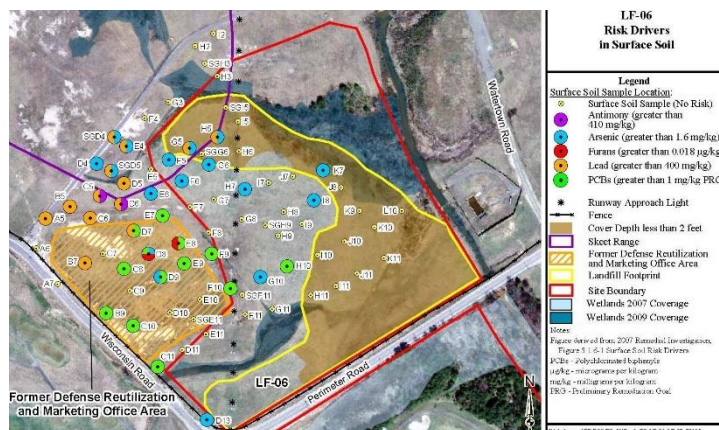
CHALLENGES

Negotiations with the Maryland Department of the Environment (MDE) were conducted to discuss landfill capping strategies. A remedial action will be required to mitigate the impacts of metals in Piscataway Creek. The negative effects to the stream banks and natural resources caused by the implementation of a remedy may be offset by wetland mitigation.

PERFORMANCE-BASED APPROACH

A removal action was carried out in summer 2013 to reduce PCBs and metals in the surface soils at the former DRMO area and to remove lead and PAHs at Piscataway Creek.

A Variance Request to the Maryland Solid Waste Management Regulations Code of Maryland Regulations (COMAR) 26.04.07.10 (final cover material and depth) and COMAR 26.04.07.21 (closure cap) for LF-06, LF-07, and BLNA was submitted in February 2014 and approved in July 2014. The Variance Request decision was approved and is included in the revised FS.



LF-06 Site Map

The FS was contracted and finalized in 2017. The FS identified and evaluated a final remedy at LF-06, LF-07, BLNA and Piscataway Creek. Several approaches were evaluated including: landfill excavation and disposal, RCRA Subtitle B Cap, or maintaining a 2-foot soil cover on the landfills. The remedy to establish and maintain a 2-foot soil cover was selected based on the technical and economic feasibility of implementation as well as its overall effectiveness.

As part of the 2014 agreement with MDE, semi-annual groundwater monitoring and quarterly methane/gas monitoring are required at LF-06, LF-07, and BLNA. Sampling reports for each monitoring event are generated and provided to all stakeholders. While the contractor's period of performance for work expired in July 2014, a new performance-based contract (PBC) was awarded to the contractor (HGL) in September 2017 for services to conduct a FS, PP and ROD for the site(s), and included activities such as groundwater and landfill gas monitoring. To date, a Landfill Gas Monitoring Plan for LF-06/07 and BLNA was approved in November 2017 and is currently ongoing. Interim land use restrictions are on going

RISK DRIVERS

Contaminants: Pesticides, VOCs, PCBs and metals

Impacted Media: Soil

Exposure Pathways Completed: Human and Ecological

Drainage: Piscataway Creek

Current Land Use/Surface Cover: Industrial

Reasonably Anticipated Land Use: Industrial

Relative Risk: Medium