

LANDFILL 7 (LF-07)/BASE LAKE NORTH AREA (BLNA) (LF-07/BLNA)

Joint Base Andrews

April 2022

BACKGROUND

Landfill 07 (LF-07) is approximately 28 acres in size and is located immediately south of LF-06 on the southern portion of the base. LF-07 operated from the 1960s to the 1980s and was used as a disposal site for construction debris, but also received some chemical and household wastes. A golf course now covers a large portion of LF-07. LF-07 drains towards Piscataway Creek, located immediately to the east. Additional wastes located north of Base Lake were identified as separate from LF-07. This location is known as the Base Lake North Area (BLNA). The BLNA is located immediately southwest of LF-07 and immediately northwest of Base Lake. BLNA is approximately 20 acres in size.

The BLNA operated from 1942 to 1955 and was utilized as a disposal site for general refuse and construction debris. The Remedial Investigation (RI) was completed in May 2007. Supplemental RI groundwater characterization was completed in 2009 to fill data gaps. The results indicate that no leachate plumes are emanating from the landfills and no actionable risk is posed by the groundwater at LF-07 or BLNA. At LF-07 and BLNA, there is no unacceptable risk in surface or subsurface soils. A Draft FS was submitted for CERCLA Tier I Partnering Team review in January 2010. Comments on the FS led to further technical investigations of the site, including groundwater and landfill gas monitoring that were completed in July 2012. These investigations were included in the revised FS and will continue under the current and future environmental remediation contract beginning in early 2020.

CHALLENGES

Negotiations with the Maryland Department of the Environment (MDE) were conducted to discuss landfill capping strategies. Any negative effects to the stream banks and natural resources caused by the implementation of a remedy may be offset by wetland mitigation. A Variance Request to the Maryland Solid Waste Management Regulations Code of Maryland Regulations (COMAR) 26.04.07.10 (final cover material and depth) and COMAR 26.04.07.21 (closure cap) for LF-06, LF-07, and BLNA was submitted in February 2014, and approved in July 2014. The Variance Request decision was included in the revised FS.

PERFORMANCE-BASED APPROACH

The FS was contracted and finalized in 2017. The FS identified and evaluated a final remedy at LF-06, LF-07, BLNA and Piscataway Creek. Several approaches were evaluated, including landfill excavation and disposal, RCRA Subtitle B Cap, or maintaining a 2-foot soil cover on the landfills.

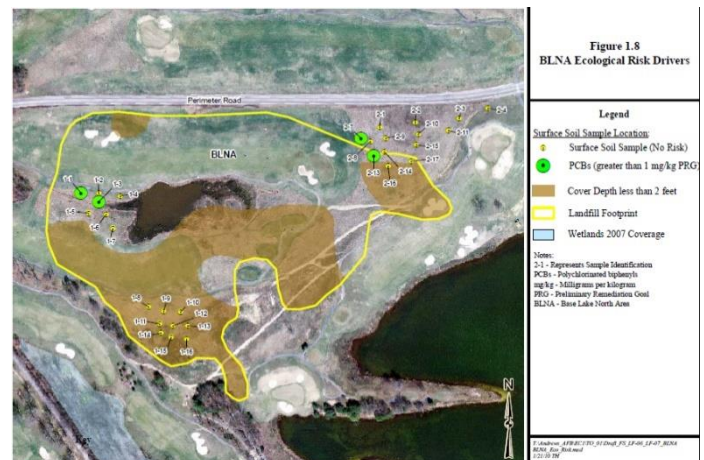


Figure 1: BLNA Site Map

The remedy to establish and maintain a 2-foot soil cover over the landfills was selected based on the technical and economic feasibility of implementation as well as its overall effectiveness.

As part of the 2014 agreement with MDE, semi-annual groundwater monitoring and quarterly methane/gas monitoring are required at LF-06, LF-07, and BLNA. Sampling reports for each monitoring event are generated and provided to all stakeholders. While the contractor's period of performance for work expired in July 2014, a new performance-based contract (PBC) was awarded to the contractor (HGL) in September 2017 for services to conduct a FS, PP and ROD for the site(s), and included activities such as groundwater and landfill gas monitoring. To date, a Landfill Gas Monitoring Plan for LF-06/07 and BLNA was approved in November 2017 and is currently ongoing, with interim land use restrictions.

RISK DRIVERS

Contaminants: PCBs

Impacted Media: Soil

Exposure Pathways Completed: Human and Ecological

Drainage: Piscataway Creek

Current Land Use/Surface Cover: Recreational

Reasonably Anticipated Land Use: Recreational

Relative Risk: NR